

Industry
Products
Group

Improving
people's quality of life





Johnson Electric is Dedicated to Improving People's Quality of Life

Our Shared Purpose

Improve the quality of life
of everyone we touch
through our innovative
motion systems

Our Promises

- Make our **customers** successful with motion solutions that deliver more comfortable, safer and healthier products for end users
- Inspire our **employees** to grow, act with ownership and find fulfillment and meaning in the work they do
- Enrich our **local communities**
- Protect our **environment** for future generations
- Maintain **financial strength** and deliver sustainable growth in profits and cash generation

Global Leader in
Motion Solutions

Motors
Pumps & Valves
Solenoids
Switches
Relays
FPC & Microelectronics



World Class
Customers Across
Diversified Industries



Proven
Financial Stability

Founded
in 1959

Stock code
179

Listed on the Hong Kong
Stock Exchange since 1984



Generating Total Sales Revenue
US\$3.4 billion

Net Income
US\$146 million

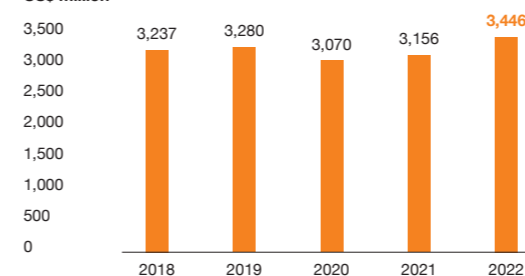


Operating in
22 countries

across
4 continents

Total Group Sales

US\$ million



Employing over
35,000 people
including
1,500+ engineers



Providing motion solutions
to over
1,700+ customers

Engineering Expert in
Various Industries



IPG

**Industry
Products
Group**



APG

**Automotive
Products
Group**

Johnson Electric Your Technology Expert

- Differentiation with innovative engineered solutions
- Technology roadmaps for multiple technologies
- High volume manufacturing technology
- Product roadmaps for continuous improvement
- Quality & reliability designed-in

Dedicated application engineering team to focus on customer requirements and application needs:

Engineering and Simulation Centers

- o CAD Design
- o Electromagnetic Simulations
- o Injection Molding Simulations
- o Structural Simulations
- o Thermal Simulations
- o Computational Fluid Dynamics

Test and Analysis Centers

- o X-Ray Computed Tomography
- o Scanning Electron Microscope
- o Structural Vibrations Laser Vibrometer
- o Characteristics of Lubricants Analysis
- o Vibration/Temperature Testing
- o Climate & Life Cycle
- o Environmental Testing
- o EMC Anechoic
- o NVH Anechoic
- o Sound/Noise Measurement
- o Cyclic Corrosion Test
- o Salt Spray Test
- o Airflow Test Bench

Engineering Expert in
Various Industries

Building a global-local manufacturing footprint

We aim to support our customers by being close to where they operate and being able to ensure fast and reliable supply and a highly responsive service. To execute this strategy, we are strengthening in-region capabilities, introducing advanced resource- and energy-efficient manufacturing technologies to our factories across Asia, North America, South America and Europe.



Segment Dedicated
Solution Engineering

Kitchen
Appliances



Ventilation



Lawn &
Garden



Battery-
Driven Tools

Robotics



Medical



Flex
Circuits

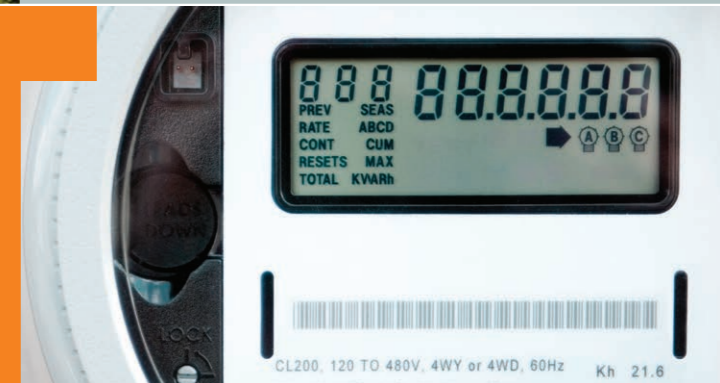


Smart Home
Windows

Heating

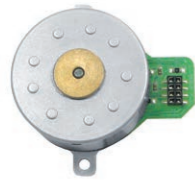


Smart
Metering



Industry Products Overview

Motors



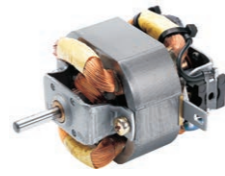
EC Motors (Brushless)

- Diameter range 32-123mm
- Power range up to 2500W



DC Motors

- Full range of low voltage and high voltage DC motor platforms



AC Motors

- Full range of universal, shaded pole and synchronous AC motor platforms



Stepper and Synchronous Motors

- Starting from 20mm diameter
- Long lifetime and high reliability, low noise and big variety of possible motor and gearbox combinations



Starters

- Sure-start pinion drive design
- High torque for freezing environment operation
- Reliable and long life solution



Blowers

- Best choice of low noise retrofit from AC to EC
- High efficient aerodynamic design with backward impeller



Gears

- Variety of planetary and spur gears to be combined with multiple motor types and sizes
- Wide torque range between 1cNm to 20Nm



Tubular Motors

- 25mm and 45mm tubular motor subsystems
- Torque ranging from 0Nm to 20Nm
- Smart home plug and play



Piezo Motors and Subsystems

- Ultra-high accuracy with a wide dynamic range of speed, from several microns per second to 250mm/sec



Piezo Stages

- Driven by ultrasonic standing wave piezo motors
- Single and multi-axis motion for a wide range of applications

Valves & Pumps



Water Valves

- Motorized water valves for intelligent flow management
- Safe operation over life



Gas Valves

- Innovative ball and linear controlled gas shut-off valves
- Highest grid efficiency with zero pressure drop



Electronic Controlled Pumps

- Unidirectional control for higher pump efficiency
- Low noise



Tubular Solenoids

- Long life, 25+million actuations
- Easy to design in with threaded nose mount feature



Open Frame Solenoids

- Diverse portfolio range (size, force, stroke)
- Magnetic latching versions available for energy conservation



Rotary Solenoids

- High speed actuation, sub 8 milliseconds possible
- Highest torque per package size in the industry



Haptic Motion Products

- Consistent feedback response
- High feedback amplitude per package size

Relays



100A Electricity Disconnect Relay

- Lowest contact resistance over time
- UC3 compliant (exceeding IEC 62052-31)



200A Electricity Disconnect Relay

- High reliability and durability
- Exceeds UL, ANSI, NEMA, CSA and IEC standards

Switches



Microswitches

- The largest switch product range in the market
- Manufactured on fully automated lines



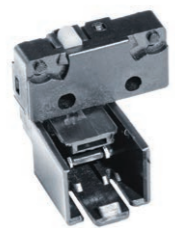
Manually Operated Switches

- Highly reliable rocker switches
- Versions available with auto-shut-off functionality



Trigger Switches

- Compact signal poti-trigger switches for BLDC applications
- High durability and lifetime



Custom Switches and Subsystems

- Combination of multiple technologies for highly reliable solution in a one-stop-shop

FPC & Microelectronics



FPC

- High density tracking
- Bespoke construction integrating
 - Thermal management
 - Dynamic cycling
 - Shielding and impedance control



Components Assembly

- 0201 SMT component assembly
- Through hole component assembly
- Flip chip assembly
- Dome assembly



Printed Electronics

- High density tracking
- Bespoke construction for:
 - HMI application
 - Antennae
 - Sensors
- 0603 component assembly



Graphic

- Screen printing
 - Formable
 - Black panel effect
 - Printed diffuser
- Digital printing
 - Black and white
 - CMYK gamut



FFC

- Flat flexible ZIF cables
 - 0.5mm – 2.54mm with 1-99 conductors
- Termination options for complete assemblies
 - AMP/TE, Hirose DF9 and others
- Protect signal integrity with EMI shielding
 - Silver or Aluminum options
 - Grounding options

Digitalization

Simulation and Digital Twins

Product Development System

Vertical Integration

Design Manufacturing

Production Tooling

Automation

Johnson Electric – Your Reliable Partner

- Total quality assurance & reliability
- Commitment to customer success at all levels in the organization
- Assurance of supply & on-time delivery worldwide
- Global logistics support 24/7
- Financial strength and long-standing supplier relationships
- Responsiveness & flexibility

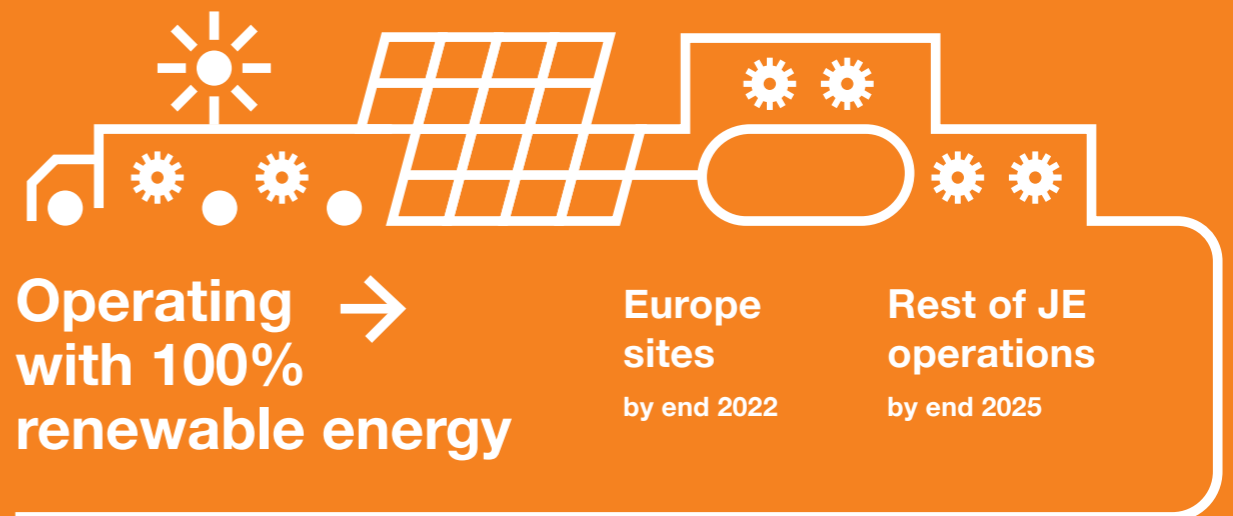
Certifications

- o ISO 9001
- o ISO 14001
- o ISO 45001
- o ISO 13485
- o ISO 26262
- o IATF 16949
- o ISO / IEC 17025

Johnson Electric – Responsibility for Sustainability

Johnson Electric uses the United Nations Sustainable Development Goals as a framework for determining its sustainability strategy.

We promise to protect the environment for future generations.



By 2030 → **CO₂** **-25% absolute carbon emissions** **-15% energy intensity**



Check out our latest sustainability report here



Headquarters (Hong Kong)
Johnson Electric Group Headquarters
6/F, 12 Science Park East Avenue
Hong Kong Science Park
Shatin, NT, Hong Kong



Get in Touch with us!

Our global sales team is at your disposal to advise and guide you toward the best solution for your project. You can send us an email to sales@johnsonelectric.com or follow the QR code to fill our contact form.



Your Local Contacts

Follow this link to identify your local sales representatives:
<https://www.johnsonelectric.com/en/contact/contact-us>